

Touchdown

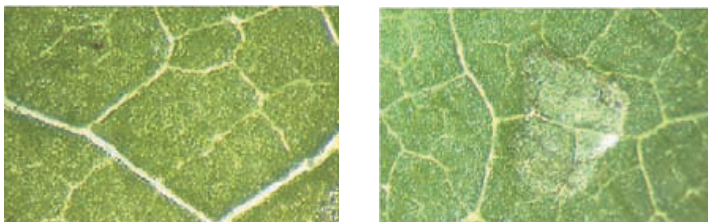
Effective at killing coffee
weeds - down to their roots

 TouchdownForte®

syngenta.

Why Touchdown is so **EFFECTIVE** at killing coffee weeds - down to their roots

Touchdown contains the best surfactants, chemicals that enables it to easily spread and stick on the leaves of a weed plant.



The upper side of leaves, 2 days after application of a drop of Touchdown



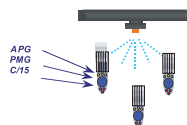
Other herbicide

(not possible to see where droplet was applied)

Four steps to successful delivery

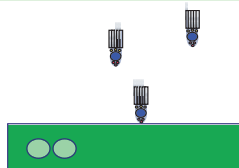
1. Convenience

High concentration
Fully loaded – no wetter to add
Safe to glyphosate tolerant crops



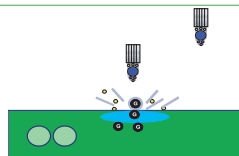
2. Application

Good contact with weed
Effective wetting on surface
Optimal spreading
Gentle to leaf surface cells to aid uptake



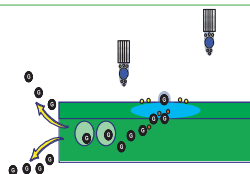
3. Penetration

Deposit and cuticle are hydrated to help continual uptake
Glyphosate moves quickly into leaf



4. Translocation

Glyphosate moves into the phloem for transport to the growing points



Environmentally safe

Get more for less

Hygroscopic

Absorption rate

Compatibility

Application

Directions for use

Touchdown is readily biodegradable being a salt made from a maize base. Its absorbed into the soil and does not interfere with soil fertility.

Brings down rate of application to 1 litre/ha, where as other products require 2 litres or more.

Absorbs moisture from air to aid in chemical transportation within the plant. Touchdown does not dry when applied in dry weather conditions, in other words.

Fast translocation to all growth areas.

Highly compatible- can be mixed with residual herbicides used to control annual and perennial weeds. Conduct compatibility test on a small scale.

Target weeds	Lt/ha	MI/15lt knapsack
Annual grass weeds e.g. <i>Avena Ssp</i> , <i>Bromus Ssp</i> , <i>Echinochloa Ssp</i> , <i>Eragrostis Cilianensis</i> , <i>Setaria Ssp</i>	0.5-2	40-225
Annual broad leaved weeds eg. <i>Bidens Pilosa</i> , <i>Commelina Bengalensis</i> , <i>Conyza Ssp</i> , <i>Datura Ssp</i> .	0.75-3	55-225
Perennial grass weeds eg. <i>Agrosti Ssp</i> , <i>Cynodon Dactylon</i> , <i>Digitaria Ssp</i> , <i>Cynodon Dactylon</i> , <i>Digitaira Ssp</i> , <i>Imperata Cylindrical</i> , <i>Panicum Maximum</i> , <i>Pennisetum Clandestinum</i> , <i>Sorghum Halepense</i> , <i>Cyperus Spp</i>	3-10	225-750

For option level of weed control when:

- Weeds are fully emerged and actively growing but not flowering (approx 15-30cm high)
- For perennials spray generally at flowering or at the seed head stage
- The soil is moist (i.e. Avoid conditions of drought, stress or water logging)
- Temperatures are between 10-20°C
- 1-3 hours rain/ irrigation free period after application ensures maximum herbicidal activity.
- To avoid containing of non target crops or plants, don't spray in

Application Equipment

Benefits

windy conditions

- Avoid spraying in extremely cold or cloudy weather (slows herbicidal activities)
- Allow 5days before subsequent cultivation.
- DO NOT allow spray or spray drift to contact green bark or stems, canes, laterals, pruned surfaces or fruits suckers. Drift control agent may be used.
- Apply on field intended to be maintained as clean fallow or while practicing non-tillage. Higher rates are better suited for better coverage of older weeds

Note:

Shake the container before adding and opening products to the spray tank

All application equipment has to be properly calibrated before use, with regard to forwards speed, flow rate and evenness of distribution.

Knapsacks: use flat nozzle at 30-45psi for overall spraying. Use foods jet nozzles at 15psi for directed selective inter-row application. Use low pressure to reduce drift.

Tractor mounted spray: Touchdown Forte can be applied using tractor mounted booms sprayers.

-
- **High efficacy-** improved dual adjuvant allows faster absorption and faster weed control than ordinary glyphosate.
 - **Rain fastness-** excellent a.i. retention, wetting, and optimal spreading compared to ordinary glyphosate product provided.
 - Improved liability in difficult spraying conditions.
 - **Systemicity-** passive and penetrative properties of dual adjuvant ensures effective movement to growing points.
 - **Re-entry-** absorbed to the soil and easily bio-degradable allowing subsequent cultivation.
 - **Flexibility-**it may be used prior to planting all crops in established planting crops such as coffee, tea, sisal, sugarcane, forestry, and industrial weeds control.
 - **Safety-** low risk to the user, consumer, wildlife and enviroment

A product of

Syngenta East Africa Limited

P. O. Box 30393-00100 Nairobi, Kenya.

Tel: + 254-203228000,

Cell: 0722205117 or 0733622778.

Email: syngenta.east_africa@syngenta.com.

www.syngenta.co.ke